

## REVIEW ARTICLE

Julie R. Ingelfinger, M.D., *Editor*

# Treatment of Hypertension in Patients with Asthma

Sandra C. Christiansen, M.D., and Bruce L. Zuraw, M.D.

From the Division of Rheumatology, Allergy, and Immunology, Department of Medicine, University of California, San Diego (S.C.C., B.L.Z.), and the Medicine Service, San Diego Veterans Affairs Healthcare (B.L.Z.) — both in San Diego. Address reprint requests to Dr. Christiansen at 8899 University Ln., Suite 230, Mailcode #0976, San Diego CA 92122, or at scchristiansen@ucsd.edu.

N Engl J Med 2019;381:1046-57.

DOI: 10.1056/NEJMra1800345

Copyright © 2019 Massachusetts Medical Society.

**A**STHMA AND HYPERTENSION ARE COMMON CHRONIC DISEASES, EACH with attendant morbidity, mortality, and economic effects. It is estimated that 300 million people worldwide have asthma, and an increase in prevalence to 400 million is anticipated by 2025. Approximately 250,000 asthma-related deaths occur yearly, many of which are believed to be avoidable.<sup>1</sup> In the United States, more than 8% of adults have asthma, with disproportionate representation among women, ethnic minorities, and people who are economically disadvantaged. Asthma-related health expenditures in 2013 were estimated at \$80 billion.<sup>2</sup> The presence of hypertension with asthma creates an additional health burden; hypertension is the world's most common modifiable risk factor for cardiovascular disease and death. Worldwide estimates suggest that 874 million adults have a systolic blood pressure higher than 140 mm Hg,<sup>3,4</sup> and the prevalence of hypertension, like that of asthma, is increasing, along with costs, morbidity, and mortality.<sup>5</sup> Elevated systolic blood pressure was the leading global contributor to preventable death in 2015.<sup>6</sup> In the United States, approximately one in three adults has high blood pressure.<sup>7</sup> Since current hypertension guidelines incorporate new evidence that has led to lower thresholds for treatment, the number of persons considered to have hypertension will expand, and the attendant costs will escalate.<sup>3</sup>

Patients with asthma are more likely to have hypertension than those who do not, independent of traditional risk factors.<sup>8</sup> A diagnosis of hypertension is associated with augmented asthma severity,<sup>9</sup> and reduced lung function has been correlated with heightened cardiovascular mortality.<sup>10</sup> Given the bidirectional relationship between compromised lung function and compromised cardiovascular function, the rationale for treating and controlling hypertension in persons with asthma is compelling. Although the effect of blood-pressure control on asthma is largely unexplored, the risk of death from cardiovascular disease is decreased when systolic blood pressure is reduced to levels below 130 mm Hg.<sup>11-14</sup> In this review, we discuss the potential mechanistic links between hypertension and asthma, the influence each condition has on the other, and approaches to the treatment of hypertension in adult patients with asthma.

## MECHANISTIC RELATIONSHIP BETWEEN HYPERTENSION AND ASTHMA

Predisposing factors (genetic profile, stress, and age), dietary and lifestyle choices, and inflammatory mechanisms all contribute to the hypertensive asthmatic phenotype. These factors may be important in understanding the development of the condition (Fig. 1).

Systemic inflammation serves as an underpinning for the burden of disease that accrues from hypertension and asthma.<sup>15</sup> Inflammation is widely accepted as being both fundamental to the pathogenesis of asthma<sup>16</sup> and central to the development of hypertension and its deleterious consequences.<sup>17,18</sup> A large cross-sectional study of middle-aged persons with asthma showed that the prevalence of hypertension was higher among those with lower values for forced expiratory volume in 1 second (FEV<sub>1</sub>), with the risk of hypertension increasing as the FEV<sub>1</sub> decreased.<sup>19</sup> Furthermore, C-reactive protein levels, a marker of systemic inflammation related to interleukin-6 and hypertension, were correlated with the rate of loss of FEV<sub>1</sub>.<sup>20</sup> Such findings may imply a reciprocal relationship, wherein systemic inflammation influences the disease course for both hypertension and asthma.

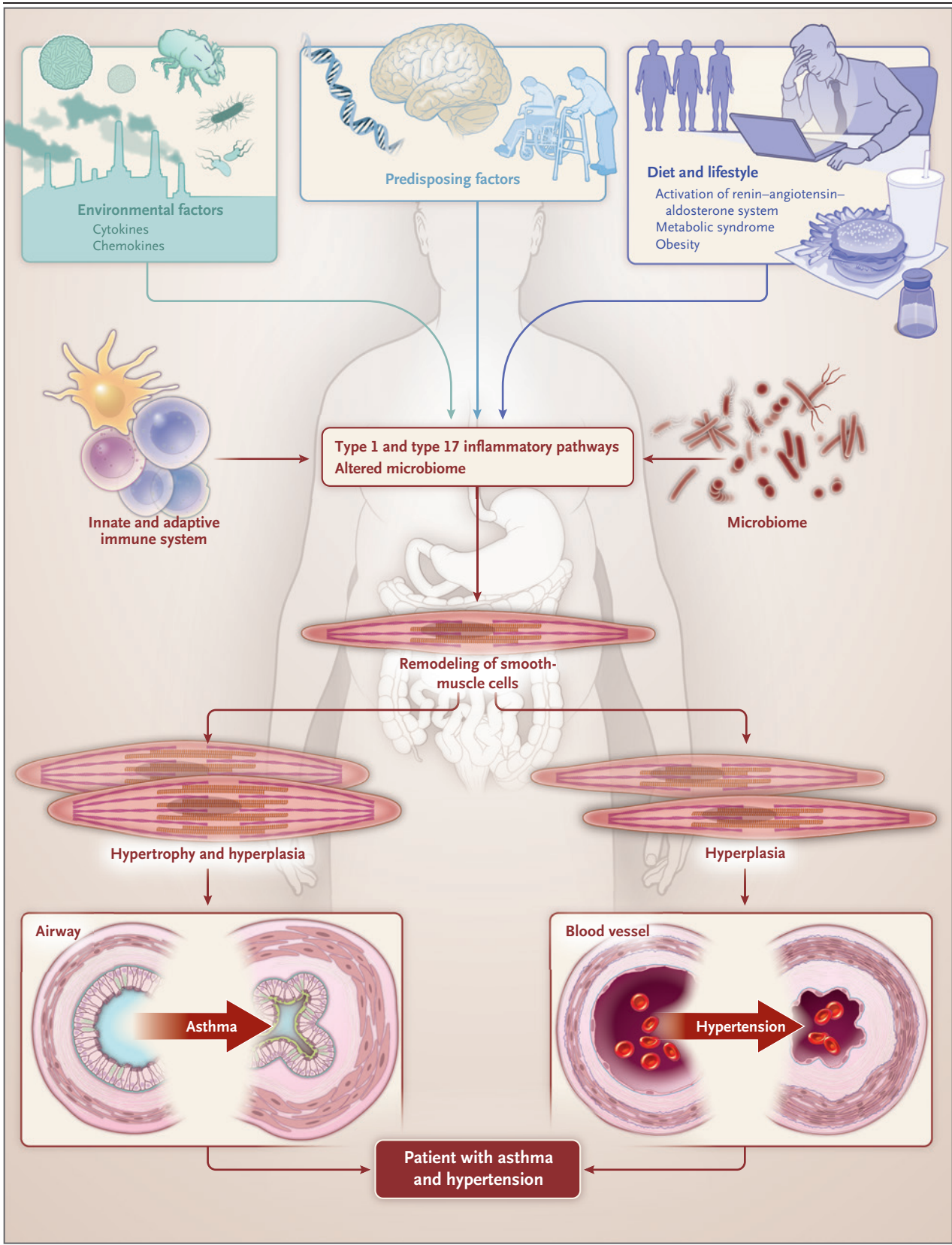
Asthma is currently understood as a disorder that is characterized by two main endotypes: type 2 high inflammation and type 2 low inflammation. These subtypes are broadly defined by their predominant underlying mechanism, which is largely determined by the T cells or innate lymphocytes and cytokines that are involved.<sup>21</sup> Each endotype can be further subdivided into multiple phenotypes that are distinguished by clinical features, pathological findings, and biomarkers (chemokines) (Table 1). Owing to the lack of uniform criteria for classifying types of asthma, estimates of the prevalence of type 2 high- and type 2 low-inflammation endotypes vary; however, each endotype appears to represent approximately half the population with asthma.<sup>16</sup>

The Severe Asthma Research Program conducted multiple studies in which patients with asthma were grouped into discreet clusters on the basis of a hierarchical analysis of variables that included clinical characteristics, biomarkers, cellular profiles, lung function, atopic status, responses to treatment, gene expression, and coexisting conditions.<sup>22-24</sup> It is notable that two studies that included hypertension as a variable showed cosegregation of hypertension with asthmatic profiles that are typical for the type 2 low-inflammation endotype.<sup>22,23</sup> Patients with features of the type 2 low-inflammation endotype (older age, later onset of asthma, higher body-mass index [BMI], greater severity of disease, and low atopy) were also more likely to have hypertension (48 of 175 patients [27%])

than patients with the type 2 high-inflammation endotype (50 of 551 patients [9%]).<sup>22</sup> The results of a separate study based on clinical characteristics and assessments of inflammatory cells in blood and sputum showed a significantly higher incidence of hypertension in clusters distinguished by severity of disease, older age, later onset of disease, higher BMI, and greater resistance to treatment with glucocorticoids: 31% (51 of 164 patients) as compared with 11% (28 of 259 patients).<sup>23</sup> These observations suggest that type 2 low inflammatory pathways may provide a pathogenic mechanism that links these two diseases.

The degree of inflammation in patients with hypertension and asthma reflects the conjoint effect of both conditions. Hypertension skews T cells toward a proinflammatory (type 1 helper T-cell [Th1 cell]) phenotype, characterized by increased interferon- $\gamma$  responses and decreased type 2 helper T-cell (Th2 cell) responses.<sup>25</sup> In asthma, enhanced airway hyperresponsiveness and severe disease are associated with elevated levels of interferon- $\gamma$ .<sup>26</sup> Correspondingly, in hypertension, interferon- $\gamma$  and Th1-cell polarization contribute to blood-pressure elevation and its sequelae.<sup>17</sup>

Interleukin-17 has also been shown to play a major role in the development of hypertension and its related end-organ damage in both studies in animals and in vitro models. Interleukin-17 induces a proinflammatory phenotype in vascular smooth-muscle cells by enhancing the release of mediators, including interleukin-6, CXCL8 and CXCL10, and C-reactive protein.<sup>27</sup> Both anti-interleukin-17 treatment and genetic deletion have been shown to reduce hypertension in studies in animals.<sup>17,27</sup> A role for interleukin-17 is also evident in some patients with severe asthma in whom an elevated level of interleukin-17 is correlated with neutrophil infiltration, airway hyperresponsiveness, and a lack of sensitivity to glucocorticoids. In these patients, interleukin-17 is capable of inducing secretion of proinflammatory cytokines from lung structural cells and airway smooth muscle, including tumor necrosis factor  $\alpha$ , interleukin-1 $\beta$ , granulocyte colony-stimulating factor, and interleukin-6 as well as the chemokines CCL11 (eotaxin) and CXCL8 (interleukin-8), which are important in airway inflammation and remodeling.<sup>28,29</sup> Surprisingly, in one trial, the targeting of interleukin-17 failed



**Figure 1 (facing page). Pathophysiology and Disease Expression in Patients with Asthma Who Have Hypertension.**

A combination of genetic factors, nervous system dysfunction, and age may predispose some persons with asthma to hypertension. Diet and lifestyle influence the likelihood of the development of obesity and metabolic syndrome and the consequent enhancement of systemic inflammation. Production of interleukin-6 from adipose tissue contributes to both airway and vascular disease. Stress is another common cofactor that increases the severity of disease. In patients with a high-salt diet, both inappropriate activation of the renin–angiotensin–aldosterone system (RAAS) and alterations in the microbiome are linked to hypertension development and more severe disease. Environmental factors, including pollutants, microbes, and viruses, can serve as stimuli for innate immune responses, activating pro-inflammatory type 1 or type 17 responses. Exposure to allergens such as dust mites may play a role in inflammation that is independent of adaptive type 2 high-inflammation responses, activating cytokine cascades by means of protease-activating receptors. Innate and adaptive immune profiles in persons with asthma who have hypertension appear predominantly as a type 2 low-inflammation endotype. In asthma, this endotype contributes to airway hyperresponsiveness, smooth-muscle hypertrophy and hyperplasia, structural remodeling, and mucous secretion. In patients with asthma who have hypertension, the inflammatory environment leads to increases in vascular tone and blood pressure.

**Table 1. Predominant Features and Characteristics of Endotypes and Phenotypes in Asthma.\***

| Characteristic                 | Type 2 High Endotype   | Type 2 Low Endotype  |
|--------------------------------|--|--|
| Phenotype and clinical profile |  |  |
| Atopic                         | Early onset, glucocorticoid sensitive  | —  |
| Late onset                     | Often accompanied by chronic sinus disease   | —  |
| AERD                           | Polypoid rhinosinusitis with respiratory reaction after exposure to aspirin or other NSAID | —  |
| Nonatopic                      | —  | Adult onset  |
| Obesity                        | —  | Female preponderance   |
| Older age                      | —  | Late onset; often steroid insensitive  |
| Cytokines                      | Interleukin-4, -5, and -13; GM-CSF   | TGF- $\beta$ , interferon- $\gamma$ , interleukin-6, -17, -1 $\beta$ , and -8, TNF- $\alpha$ |
| Cellular                       | Eosinophilic   | Neutrophilic or paucigranulocytic  |
| Onset                          | Frequently younger age but severe asthma may develop in older age                          | Usually present in older age   |
| Atopy                          | High   | Low  |
| Glucocorticoid responsiveness  | Usually responsive, particularly in mild and moderate asthma                               | Often relatively refractory  |
| Severity                       | Variable, can be severe  | Often severe   |

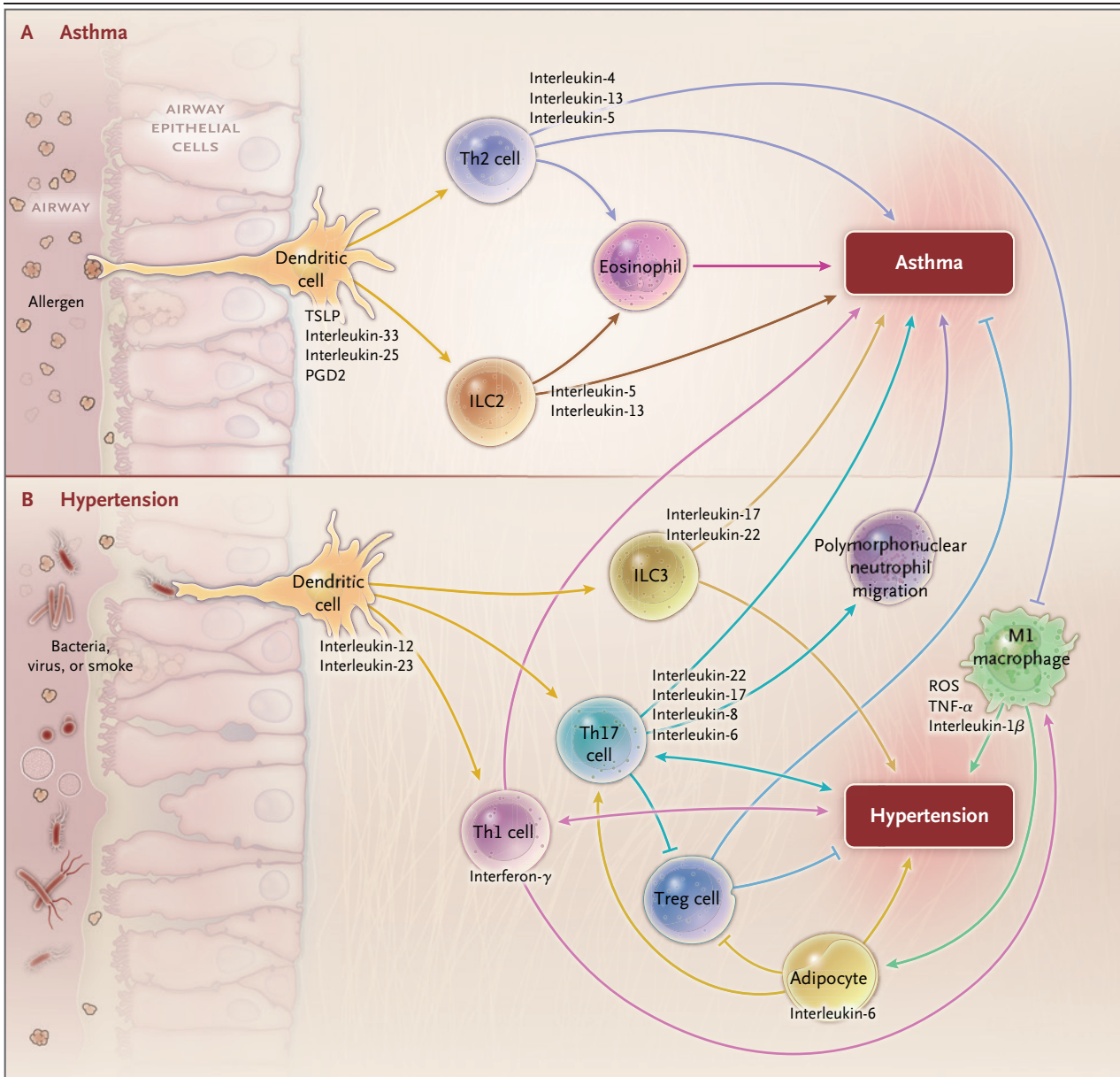
\* AERD denotes aspirin-exacerbated respiratory disease, GM-CSF granulocyte–macrophage colony-stimulating–factor, NSAID nonsteroidal antiinflammatory drug, TGF- $\beta$  transforming growth factor  $\beta$ , and TNF- $\alpha$  tumor necrosis factor  $\alpha$ .

to ameliorate symptoms in patients with severe asthma<sup>30</sup>; however, a subgroup analysis identified patients with highly reversible depression in FEV<sub>1</sub> who had some improvement, as reflected by the Asthma Control Questionnaire. The functional role of interleukin-17 in the contraction of smooth-muscle cells may offer a partial explanation for the more favorable response in this subgroup.<sup>31</sup>

Experimental evidence supports the concept that elevated interleukin-6 levels can drive the

differentiation of CD4+ T cells through interaction with transforming growth factor  $\beta$  to promote skewing toward type 17 helper cells (Th17) cells, leading to a reduction of regulatory T cells (Tregs). Tregs play a protective role in the development of hypertension that is related in part to production of interleukin-10<sup>27</sup> and play a critical role in the regulation of asthma development.<sup>32</sup>

Interactions among interferon- $\gamma$ , interleukin-17, and interleukin-6 have the potential to affect disease expression for both hypertension and asthma



**Figure 2. Inflammatory Pathways in Patients with Asthma Who Have Hypertension.**

Type 2 high asthma (Panel A) has not been mechanistically linked to hypertension. In addition, type 2 cytokines such as interleukin-4 and interleukin-13 promote the M2 phenotype in macrophages rather than the M1 phenotype implicated in hypertension. Type 2 low asthma has multiple mechanistic links with the inflammation involved in hypertension (Panel B). Type 1- and type 17-biased immune responses may dually influence both the expression and the severity of asthma and hypertensive disease. Interferon- $\gamma$  also promotes M1 macrophages that both activate adipocytes and directly contribute to hypertension, whereas interleukin-6 participates in down-regulating regulatory T cells (Tregs) that inhibit both hypertensive and asthmatic inflammation. ILC2 and ILC3 denote group 2 and group 3 innate lymphoid cells; PGD<sub>2</sub> prostaglandin D<sub>2</sub>; ROS reactive oxygen species; Th1, Th2, and Th17 type 2, type 3, and type 17 helper cells; and TSLP thymic stromal lymphopoietin.

(Fig. 2). Together, these cytokines stimulate the inflammation, smooth-muscle activation, and fibrinogenesis that are fundamental to airway and cardiovascular disease. Thus, persons who

have both hypertension and asthma appear to compose a patient subgroup with difficult-to-treat disease who are at increased risk for end-organ damage.

**OBESITY AND METABOLIC DYSFUNCTION**

Elevated interleukin-6 levels and systemic inflammation result in metabolic dysfunction that increases the morbidity associated with both hypertension and asthma. Secretion of proinflammatory cytokines, notably interleukin-6, by adipocytes and inflammatory macrophages in white adipose tissue is of pathogenic importance in asthma,<sup>33</sup> a condition in which interleukin-6 appears to be a biomarker for metabolic dysfunction and severe disease.<sup>34</sup> Elevation of interleukin-6 levels has been identified in association with hypertension in studies in humans and animals, in which it has been shown to be related to disease development.<sup>35,36</sup>

**SMOOTH-MUSCLE REMODELING AND VASCULAR BIOLOGY**

Smooth-muscle remodeling, driven in substantial part by inflammatory cytokines, is a critical component of both asthma and hypertension.<sup>37-39</sup> Hyperplasia and abnormal contracture of the smooth-muscle cells surrounding the airway play an important role in airway obstruction in asthma. Similarly, the abnormal contraction and proliferation of smooth-muscle cells are well recognized as features of the vascular remodeling and endothelial abnormalities associated with hypertension.

Genetic factors clearly affect the expression of asthma and hypertension; however, the relevant interrelations are complex and difficult to dissect. Polymorphisms in  $\beta$ -adrenergic receptors on smooth-muscle cells have been reported in patients with both hypertension and asthma, but their importance in disease manifestation may lie in their modulation of the response to antagonists and agonists, which could have more influence on treatment outcomes than on disease causation.<sup>40</sup> In contrast, modification of the vascular smooth-muscle cell phenotype in response to local environmental influences is thought to play a critical role in the pathogenesis of hypertension and asthma as well as atherosclerosis.<sup>41</sup>

**DIETARY SALT**

Dietary salt intake has long been considered to be relevant to the development of cardiovascular conditions. Early observations associating higher salt intake with blood-pressure elevation have been refined to identify subpopulations of salt-sensitive and salt-insensitive persons.<sup>42</sup> The responsiveness of the kidneys, sympathetic nervous sys-

tem, and vasculature to salt has been observed.<sup>43</sup> The immune system may be important in responsiveness to salt. For example, Th17 cells appear to play a role in mediating the relationship between salt exposure and hypertension.<sup>17,18,27</sup> In a mouse model, high-salt diets promoted the generation of Th17 cells through alterations in the gut microbiome, with depletion of *Lactobacillus murinus*. Salt-sensitive hypertension is prevented by treatment with *L. murinus*, which has a modulating effect on Th17 cells. Evidence suggests that the effect is related to the tryptophan metabolites produced by this organism.<sup>44</sup> Healthy persons on a high-salt diet are also reported to have reduced levels of lactobacillus, elevated levels of Th17 cells, and elevated blood pressure, all of which support the proposition that higher salt intake plays a role in inflammation in humans.<sup>44-46</sup> At present, similar information related to dietary salt content in patients with asthma is lacking.

---

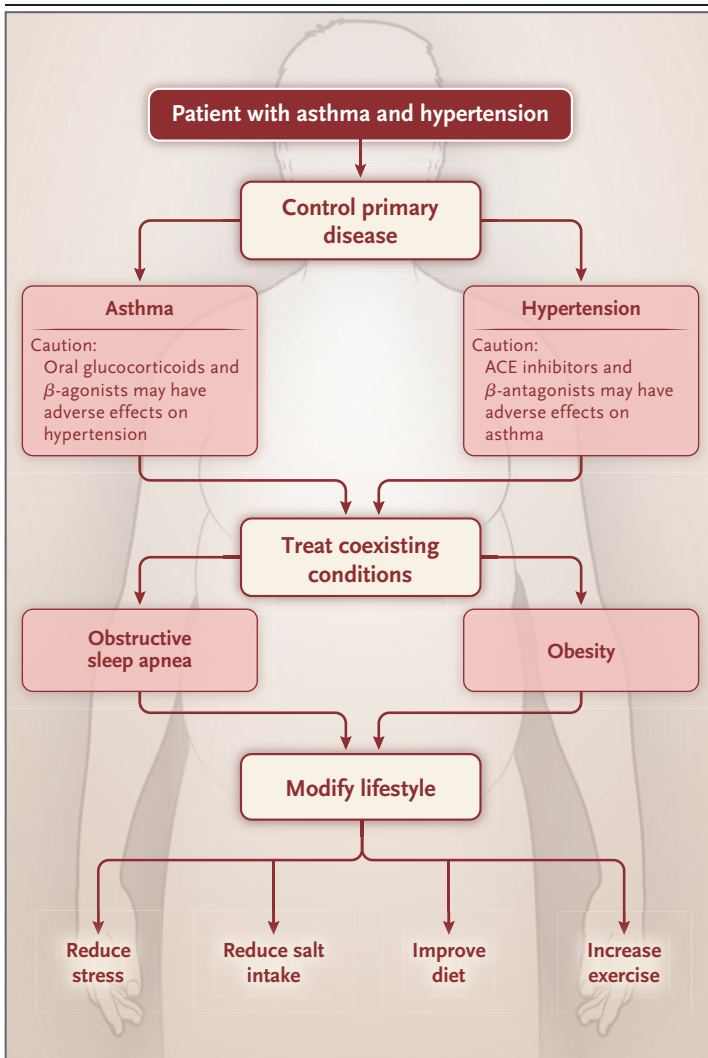
MANAGEMENT OF DISEASE  
IN PATIENTS WITH ASTHMA  
AND HYPERTENSION

---

The mechanisms linking asthma and hypertension not only are of theoretical interest but also have implications for therapy and disease management. The treatment of hypertension in a patient with asthma should involve a multifactorial approach that involves control of both conditions, treatment of coexisting conditions, and the institution of lifestyle modifications (Fig. 3).

**PHARMACOLOGIC TREATMENT OF HYPERTENSION IN PATIENTS WITH ASTHMA**

In the 2017 report of the American College of Cardiology–American Heart Association Task Force on clinical practice guidelines for the prevention, detection, evaluation, and management of high blood pressure in adults, hypertension was categorized as either stage 1 (130–139/80–89 mm Hg) or stage 2 (>140/>90 mm Hg).<sup>3</sup> Pharmacotherapy was recommended for patients who have or who are at high risk for cardiovascular disease at stage 1 and for all patients at stage 2. It is noteworthy that the threshold for a diagnosis of hypertension was lowered in the 2017 guidelines, a development that has led to substantial controversy, since it has expanded the percentage of adults in the United States with a diagnosis of hypertension from 32% to 46%.



**Figure 3. Approaches to Treatment.**

Gaining control of hypertension and asthma is the initial step in treatment, with specific cautions regarding pharmacologic treatment. Patients should be monitored for deleterious effects. It is essential to identify and treat coexisting conditions, which have the potential to increase the severity of disease. Lifestyle modifications are of fundamental importance, with an emphasis on dietary modifications (including reduced salt intake, moderate intake of ethyl alcohol [found in beer, wine, and distilled spirits], and increased potassium intake), stress reduction, exercise, and weight loss (as needed).

What does the treatment of hypertension generally accomplish, and how might that treatment affect patients with asthma? To date, all-cause mortality has not differed significantly among patients with hypertension treated with any of the four major classes of first-line antihypertensive agents (Table 2). The degree of blood-pressure reduction rather than the choice of anti-

hypertensive medication appears to be the major determinant of outcome.<sup>47</sup> In patients with asthma, however, additional issues related to various pharmacologic agents should be considered.

#### *Beta-Blockers*

Some caution should be used when introducing beta-blockers to patients with asthma owing to concerns regarding both unopposed bronchoconstrictive signals and therapeutic response to  $\beta_2$ -agonists. Furthermore, beta-blockers are not generally recommended as monotherapy for the treatment of hypertension in patients with most conditions, although there may be specific indications for patients with congestive heart failure who have arrhythmias or who have had myocardial infarction.<sup>3,4</sup>

Beta-blockers may be either nonselective, targeting both the  $\beta_1$  and  $\beta_2$  adrenergic receptors, or relatively cardioselective, predominantly targeting the  $\beta_1$  receptor. Selective beta-blockers differ in their relative potency against  $\beta_1$  and  $\beta_2$  receptors, and their selectivity may be decreased at higher doses. Asthma exacerbations and even fatal outcomes have been reported after treatment of glaucoma with eyedrops that contain nonselective beta-adrenergic blockers.<sup>48,49</sup> A meta-analysis of randomized, blinded, placebo-controlled trials reported relatively small but significant declines in FEV<sub>1</sub> in patients who had received short-term treatment with a selective or nonselective beta-blocker, but a significant increase in symptoms was reported only in patients who received nonselective blockers.<sup>50</sup> A subgroup of patients did have a decline in FEV<sub>1</sub> of 20% or more after short-term exposure to selective beta-blockers. A decrease in the response to short-acting  $\beta_2$  agonists (SABAs) was noted, with selective beta-blockers blunting the response and nonselective blockers abrogating the response.<sup>50</sup> Long-term exposure to beta-blockers is associated with a lower risk of bronchospasm than short-term exposure. In clinical practice, beta-blockers have been used in patients who had disease that was stable, who did not have evidence of reduced FEV<sub>1</sub>, did not increase use of SABAs, and did not have an increase in symptoms with continued treatment.<sup>9,51</sup> Nevertheless, the use of beta-blockers in patients with unstable disease or those with severe airway obstruction requires vigilance.

**Table 2. Pharmacologic Agents and Indications.**

| Drug Class                              | Indications  | Side Effects and Cautions  | Asthma-Specific Considerations   |
|---|--|--|--|
| Thiazide-type diuretic                  | First-line or add-on drug  | Monitor sodium and potassium levels and, in older patients, hyponatremia.  | Reduced potassium levels with increased use of short-acting beta-agonists, theophylline, and glucocorticoids |
| Angiotensin-converting–enzyme inhibitor | First-line or add-on drug for chronic kidney disease, congestive heart failure, and myocardial infarction  | Monitor potassium and creatinine levels. Risk of angioedema is 2 to 4 times as high in black patients. Avoid in pregnant patients.   | Cough; possible increase in asthma morbidity   |
| Angiotensin-receptor blocker            | First-line or add-on drug for chronic kidney disease, congestive heart failure, and myocardial infarction  | Monitor potassium and creatinine levels. Avoid in pregnant patients.   | Reduced bronchial hyperresponsiveness  |
| Calcium-channel blockers                |  |  |  |
| Dihydropyridine                         | First-line or add-on drug  | Edema; may worsen proteinuria and left ventricular outflow-tract obstruction.  | Possible favorable effects on smooth-muscle contraction and on triggering factors                            |
| Nondihydropyridine                      | First-line or add-on drug  | Constipation and heart block may occur when used with beta-blockers.   | Possible favorable effects on smooth-muscle contraction and on triggering factors                            |
| Beta-blockers                           | Not recommended as monotherapy; particular concerns for patients 60 yr of age and older (i.e., increased fatigue, decreased exercise tolerance, inferior therapeutic outcomes); indications include congestive heart failure, myocardial infarction, and arrhythmias | Bradycardia, fatigue, heart failure, and insomnia may occur. Peripheral circulation may be impaired. Glucose and lipid metabolism and ability to exercise may be affected. | Bronchospasm; caution in patients whose asthma is unstable and in patients with severe obstruction           |

### Angiotensin-Converting–Enzyme Inhibitors

As is the case in the general population of patients with hypertension, angiotensin-converting–enzyme (ACE) inhibitors are useful in patients with asthma and hypertension — they are not contraindicated. However, clinical confusion regarding asthma control can arise during treatment, because an ACE inhibitor–related cough may develop in exposed patients.<sup>52</sup> The incidence of this side effect is unclear, ranging from 2.8 to 40% depending on ethnicity, genotype, presence of underlying cardiovascular disease, methodology of assessment, and the specific ACE inhibitor used.<sup>52–56</sup> ACE inhibitors have also been associated with escalating severity of asthma in some patients with hypertension.<sup>57</sup> In a case–control trial involving patients with hypertension and asthma, ACE inhibitors were associated with increased asthma morbidity, including increased use of SABAs, increased emergency-department visits or hospitalizations, and increased use of systemic glucocorticoids.<sup>9</sup> Given that ACE inhibi-

tors are considered to be a major drug class for the treatment of hypertension, clinicians should be alert to the fact that the use of these drugs can be deleterious in a minority of patients with asthma.

### Angiotensin-Receptor Blockers

Angiotensin-receptor blockers (ARBs) may be the preferred drugs that act on the renin–angiotensin system for use in patients with asthma who have hypertension. Levels of circulating angiotensin II and renin were found to be increased in patients with severe asthma during exacerbations as compared with those without exacerbation.<sup>58</sup> Experimental infusion of angiotensin II also led to a decrease in FEV<sub>1</sub> and an increase in symptoms of chest tightness or cough in patients with mild asthma.<sup>58</sup> Inhibition of angiotensin II type 1 receptors has resulted in slight abatement in bronchial hyperresponsiveness.<sup>59</sup> ARBs appear to target pathways that would address both hypertension and asthma. ARBs do



not appear to result in either cough or increased airway responsiveness, even in patients who are unable to take an ACE inhibitor.<sup>60,61</sup>

#### *Calcium-Channel Blockers*

There are theoretical benefits associated with the use of calcium-channel blockers in patients with asthma who have hypertension. This class of medication decreases smooth-muscle contraction; alleviates the bronchoconstriction that may occur in response to a variety of stimuli, including certain antigens, exercise, histamine, and cold air; and induces mild bronchodilation.<sup>62</sup> In clinical practice, however, calcium-channel blockers have not been shown to have a salutary effect on asthma outcomes.<sup>63,64</sup> Nonetheless, given their physiological profile and efficacy, calcium-channel blockers are a favored treatment for persons with asthma who have hypertension.<sup>3,4,65,66</sup>

#### *Thiazides*

Low-dose thiazides, used alone or in combination with other agents, such as calcium-channel blockers, are often prescribed for the treatment of hypertension.<sup>67</sup> In asthma, high doses of a  $\beta_2$  agonist can be associated with hypokalemia, which appears to be more severe in patients who take diuretics and are thus subject to the resultant arrhythmogenic potential.<sup>68</sup> For a patient with asthma and hypertension who is receiving diuretics as well as a  $\beta_2$  agonist, the addition of a glucocorticoid or theophylline may further enhance the risk of hypokalemia.

#### **PHARMACOLOGIC TREATMENT OF ASTHMA IN PATIENTS WITH HYPERTENSION**

Hypertension is a leading cardiovascular complication of the use of systemic glucocorticoids.<sup>69</sup> Since persons with asthma who have hypertension often have a severe asthma phenotype and receive long-term or high-dose treatment with systemic glucocorticoids, blood-pressure control may become an issue. Similarly, frequent use of SABAs as a rescue medication is also of concern with respect to cardiovascular risk.<sup>70</sup> Adjusting pharmacologic management in this patient population to minimize the required dosages of systemic glucocorticoids and SABAs is therefore of particular importance. Approaches to the treatment of severe, difficult-to-treat asthma have

recently been reviewed.<sup>21</sup> Current biologic therapies predominantly target the type 2 high-inflammation endotype, but agents for the treatment of the type 2 low-inflammation endotype are also under investigation.<sup>21,71</sup>

#### *Obstructive Sleep Apnea*

Obstructive sleep apnea is associated with hypertension and is thought to promote the inflammatory cascades involved in both cardiovascular disease and asthma.<sup>72</sup> The intermittent hypoxia that typifies obstructive sleep apnea activates pathways mediated by nuclear factor kappa light-chain enhancer of activated B cells (NF- $\kappa$ B), releasing mediators integral to systemic inflammation and vascular pathology.<sup>19,72</sup> Although the effect of treatment for obstructive sleep apnea on blood-pressure control has yet to be clearly delineated,<sup>3,4</sup> treatment appears to effect a reduction in inflammatory markers that may contribute to the development of hypertension.<sup>72</sup>

#### *Obesity*

The global obesity epidemic has coincided with the growing prevalence of hypertension and asthma.<sup>6,73</sup> In the United States, two thirds of the population are considered to be overweight or obese.<sup>74</sup> For every 5% increase in weight, the risk of hypertension rises by 20 to 30%.<sup>75</sup> Obesity has also been directly associated with asthma severity.<sup>76,77</sup> Conversely, weight loss improves multiple outcomes in obese persons with asthma.<sup>78</sup> Thus, weight loss is important for obese persons who have both asthma and hypertension. However, the treatment of obesity is extremely difficult, requiring a multidisciplinary approach.<sup>79</sup>

#### *Lifestyle*

Trends in the general population, including increases in dietary salt intake, ingestion of calories from sources other than vegetables and fruits, obesity, and reductions in physical activity have likely contributed to the increased prevalence of hypertension and, possibly, of asthma.<sup>6,73</sup> Patients with both conditions may benefit from lifestyle modifications, including changes in diet, restriction of salt intake, and increased physical activity.<sup>80-82</sup> Weight loss can effect decreases of approximately 1 mm Hg in blood pressure for each kilogram lost as well as reductions in car-

diovascular mortality. Each of these nonpharmacologic interventions has the potential to reduce systolic blood pressure by 3 to 8 mm Hg and diastolic blood pressure by 1 to 4 mm Hg.<sup>4,83-85</sup> A healthful diet and exercise can also have a favorable influence on asthma outcomes, even in non-obese patients.<sup>86</sup>

Stress has been linked to increased susceptibility to a variety of diseases, including hypertension and asthma.<sup>87-89</sup> Although controlled outcome studies of the effect of stress reduction on patients with hypertension and asthma are lacking, it would be of interest to investigate non-pharmacologic approaches, such as transcendental meditation and mindfulness-based stress reduction.

## CONCLUSIONS

Persons with both hypertension and asthma represent an important subset of the globally esca-

lating number of persons with cardiovascular and airway disease. Experimental evidence from studies in animals and observations in human disease highlight smooth-muscle activation, vascular dysfunction, and systemic inflammation as unifying characteristics within this cohort. The influence of type 1 and type 17 inflammatory pathways is noteworthy for increasing the severity of disease in patients who have hypertension and severe asthma who are also obese and have metabolic dysfunction. The treatment of patients with both hypertension and asthma should involve an integrated approach that includes pharmacotherapy and changes in lifestyle. A combination of interventions — including diet modification, salt restriction, stress reduction, and weight loss — that target shared pathophysiological mechanisms may be of value for these patients.

Disclosure forms provided by the authors are available with the full text of this article at [NEJM.org](http://NEJM.org).

## REFERENCES

- Bousquet J, Khaltaev N. Global surveillance, prevention and control of chronic respiratory diseases: a comprehensive approach. Geneva: World Health Organization, 2007.
- Akinbami LJ, Moorman JE, Bailey C, et al. The economic burden of asthma in the United States, 2008–2013. *Ann Am Thorac Soc* 2018;15:348-56.
- Whelton PK, Carey RM, Aronow WS, et al. 2017 ACC/AHA/AAPA/ABC/ACPM/AGS/APhA/ASH/ASPC/NMA/PCNA guideline for the prevention, detection, evaluation, and management of high blood pressure in adults: a report of the American College of Cardiology/American Heart Association Task Force on Clinical Practice Guidelines. *J Am Coll Cardiol* 2018;71(19):e127-e248.
- Whelton PK, Carey RM, Aronow WS, et al. 2017 ACC/AHA/AAPA/ABC/ACPM/AGS/APhA/ASH/ASPC/NMA/PCNA guideline for the prevention, detection, evaluation, and management of high blood pressure in adults: executive summary: a report of the American College of Cardiology/American Heart Association Task Force on Clinical Practice Guidelines. *J Am Coll Cardiol* 2018;71:2199-269.
- Forouzanfar MH, Liu P, Roth GA, et al. Global burden of hypertension and systolic blood pressure of at least 110 to 115 mm Hg, 1990–2015. *JAMA* 2017;317:165-82.
- GBD 2015 Risk Factors Collaborators. Global, regional, and national comparative risk assessment of 79 behavioural, environmental and occupational, and metabolic risks or clusters of risks, 1990–2015: a systematic analysis for the Global Burden of Disease Study 2015. *Lancet* 2016;388:1659-724.
- Mozaffarian D, Benjamin EJ, Go AS, et al. Heart disease and stroke statistics — 2015 update: a report from the American Heart Association. *Circulation* 2015;131(4):e29-e322.
- Dogra S, Ardern CI, Baker J. The relationship between age of asthma onset and cardiovascular disease in Canadians. *J Asthma* 2007;44:849-54.
- Christiansen SC, Schatz M, Yang SJ, Ngor E, Chen W, Zuraw BL. Hypertension and asthma: a comorbid relationship. *J Allergy Clin Immunol Pract* 2016;4:76-81.
- Sin DD, Wu L, Man SF. The relationship between reduced lung function and cardiovascular mortality: a population-based study and a systematic review of the literature. *Chest* 2005;127:1952-9.
- Williamson JD, Supiano MA, Applegate WB, et al. Intensive vs standard blood pressure control and cardiovascular disease outcomes in adults aged  $\geq 75$  years: a randomized clinical trial. *JAMA* 2016;315:2673-82.
- Ettehad D, Emdin CA, Kiran A, et al. Blood pressure lowering for prevention of cardiovascular disease and death: a systematic review and meta-analysis. *Lancet* 2016;387:957-67.
- The SPRINT Research Group. A randomized trial of intensive versus standard blood-pressure control. *N Engl J Med* 2015;373:2103-16.
- Berlowitz DR, Foy CG, Kazis LE, et al. Effect of intensive blood-pressure treatment on patient-reported outcomes. *N Engl J Med* 2017;377:733-44.
- Hotamisligil GS. Inflammation, metaflammation and immunometabolic disorders. *Nature* 2017;542:177-85.
- Gauthier M, Ray A, Wenzel SE. Evolving concepts of asthma. *Am J Respir Crit Care Med* 2015;192:660-8.
- Wenzel U, Turner JE, Krebs C, Kurts C, Harrison DG, Ehmke H. Immune mechanisms in arterial hypertension. *J Am Soc Nephrol* 2016;27:677-86.
- Guzik TJ, Hoch NE, Brown KA, et al. Role of the T cell in the genesis of angiotensin II induced hypertension and vascular dysfunction. *J Exp Med* 2007;204:2449-60.
- Ferguson S, Teodorescu MC, Gangnon RE, et al. Factors associated with systemic hypertension in asthma. *Lung* 2014;192:675-83.
- Rasmussen F, Mikkelsen D, Hancox RJ, et al. High-sensitive C-reactive protein is associated with reduced lung function in young adults. *Eur Respir J* 2009;33:382-8.
- Israel E, Reddel HK. Severe and difficult-to-treat asthma in adults. *N Engl J Med* 2017;377:965-76.
- Moore WC, Meyers DA, Wenzel SE, et al. Identification of asthma phenotypes using cluster analysis in the Severe Asthma Research Program. *Am J Respir Crit Care Med* 2010;181:315-23.
- Moore WC, Hastie AT, Li X, et al. Sputum neutrophil counts are associated with

- more severe asthma phenotypes using cluster analysis. *J Allergy Clin Immunol* 2014;133(6):1557-63.e5.
24. Modena BD, Tedrow JR, Milosevic J, et al. Gene expression in relation to exhaled nitric oxide identifies novel asthma phenotypes with unique biomolecular pathways. *Am J Respir Crit Care Med* 2014;190:1363-72.
25. Shao J, Nangaku M, Miyata T, et al. Imbalance of T-cell subsets in angiotensin II-infused hypertensive rats with kidney injury. *Hypertension* 2003;42:31-8.
26. Raundhal M, Morse C, Khare A, et al. High IFN- $\gamma$  and low SLPI mark severe asthma in mice and humans. *J Clin Invest* 2015;125:3037-50.
27. Chen S, Agrawal DK. Dysregulation of T cell subsets in the pathogenesis of hypertension. *Curr Hypertens Rep* 2015;17:8.
28. Chesné J, Braza F, Mahay G, Brouard S, Aronica M, Magnan A. IL-17 in severe asthma: where do we stand? *Am J Respir Crit Care Med* 2014;190:1094-101.
29. Wang YH, Wills-Karp M. The potential role of interleukin-17 in severe asthma. *Curr Allergy Asthma Rep* 2011;11:388-94.
30. Busse WW, Holgate S, Kerwin E, et al. Randomized, double-blind, placebo-controlled study of brodalumab, a human anti-IL-17 receptor monoclonal antibody, in moderate to severe asthma. *Am J Respir Crit Care Med* 2013;188:1294-302.
31. Kudo M, Melton AC, Chen C, et al. IL-17A produced by  $\alpha\beta$  T cells drives airway hyper-responsiveness in mice and enhances mouse and human airway smooth muscle contraction. *Nat Med* 2012;18:547-54.
32. Lloyd CM, Hawrylowicz CM. Regulatory T cells in asthma. *Immunity* 2009;31:438-49.
33. Weisberg SP, McCann D, Desai M, Rosenbaum M, Leibel RL, Ferrante AW Jr. Obesity is associated with macrophage accumulation in adipose tissue. *J Clin Invest* 2003;112:1796-808.
34. Peters MC, McGrath KW, Hawkins GA, et al. Plasma interleukin-6 concentrations, metabolic dysfunction, and asthma severity: a cross-sectional analysis of two cohorts. *Lancet Respir Med* 2016;4:574-84.
35. Gibas-Dorna M, Nowak D, Piatek J, Pupek-Musialik D, Krauss H, Koczyński P. Plasma ghrelin and interleukin-6 levels correlate with body mass index and arterial blood pressure in males with essential hypertension. *J Physiol Pharmacol* 2015;66:367-72.
36. Lee DL, Leite R, Fleming C, Pollock JS, Webb RC, Brands MW. Hypertensive response to acute stress is attenuated in interleukin-6 knockout mice. *Hypertension* 2004;44:259-63.
37. Simcock DE, Kanabar V, Clarke GW, et al. Induction of angiogenesis by airway smooth muscle from patients with asthma. *Am J Respir Crit Care Med* 2008;178:460-8.
38. Rzcudlo EM, Martin KA, Powell RJ. Regulation of vascular smooth muscle cell differentiation. *J Vasc Surg* 2007;45:Suppl A:A25-A32.
39. Wettschueck N, Offermanns S. Rho/Rho-kinase mediated signaling in physiology and pathophysiology. *J Mol Med (Berl)* 2002;80:629-38.
40. Leineweber K, Heusch G. Beta 1- and beta 2-adrenoceptor polymorphisms and cardiovascular diseases. *Br J Pharmacol* 2009;158:61-9.
41. Rzcudlo EM. Signaling pathways regulating vascular smooth muscle cell differentiation. *Vascular* 2009;17:Suppl 1: S15-S20.
42. Chrysant GS, Bakir S, Oparil S. Dietary salt reduction in hypertension — what is the evidence and why is it still controversial? *Prog Cardiovasc Dis* 1999;42:23-38.
43. Coffman TM. Under pressure: the search for the essential mechanisms of hypertension. *Nat Med* 2011;17:1402-9.
44. Wilck N, Matus MG, Kearney SM, et al. Salt-responsive gut commensal modulates T<sub>H</sub>17 axis and disease. *Nature* 2017;551:585-9.
45. Afsar B, Kuwabara M, Ortiz A, et al. Salt intake and immunity. *Hypertension* 2018;72:19-23.
46. Rucker AJ, Rudemiller NP, Crowley SD. Salt, hypertension, and immunity. *Annu Rev Physiol* 2018;80:283-307.
47. Law MR, Morris JK, Wald NJ. Use of blood pressure lowering drugs in the prevention of cardiovascular disease: meta-analysis of 147 randomised trials in the context of expectations from prospective epidemiological studies. *BMJ* 2009;338:b1665.
48. Fraunfelder FT, Barker AF. Respiratory effects of timolol. *N Engl J Med* 1984;311:1441.
49. Taniguchi M, Kino H, Mori M, Nakahama M. A case of fatal asthma induced by timolol eye-drop. *Nihon Kyobu Shikkan Gakkai Zasshi* 1990;28:156-9. (In Japanese.)
50. Morales DR, Jackson C, Lipworth BJ, Donnan PT, Guthrie B. Adverse respiratory effect of acute  $\beta$ -blocker exposure in asthma: a systematic review and meta-analysis of randomized controlled trials. *Chest* 2014;145:779-86.
51. Salpeter SR, Ormiston TM, Salpeter EE. Cardioselective beta-blockers in patients with reactive airway disease: a meta-analysis. *Ann Intern Med* 2002;137:715-25.
52. Israili ZH, Hall WD. Cough and angio-neurotic edema associated with angiotensin-converting enzyme inhibitor therapy: a review of the literature and pathophysiology. *Ann Intern Med* 1992;117:234-42.
53. Woo KS, Nicholls MG. High prevalence of persistent cough with angiotensin converting enzyme inhibitors in Chinese. *Br J Clin Pharmacol* 1995;40:141-4.
54. Vukadinović D, Vukadinović AN, Lavall D, Laufs U, Wagenpfeil S, Böhm M. Rate of cough during treatment with angiotensin-converting enzyme inhibitors: a meta-analysis of randomized placebo-controlled trials. *Clin Pharmacol Ther* 2019;105:652-60.
55. Omboni S, Borghi C. Zofenopril and incidence of cough: a review of published and unpublished data. *Ther Clin Risk Manag* 2011;7:459-71.
56. Mukae S, Itoh S, Aoki S, et al. Association of polymorphisms of the renin-angiotensin system and bradykinin B2 receptor with ACE-inhibitor-related cough. *J Hum Hypertens* 2002;16:857-63.
57. Lunde H, Hedner T, Samuelsson O, et al. Dyspnoea, asthma, and bronchospasm in relation to treatment with angiotensin converting enzyme inhibitors. *BMJ* 1994;308:18-21.
58. Millar EA, Angus RM, Hulks G, Morton JJ, Connell JM, Thomson NC. Activity of the renin-angiotensin system in acute severe asthma and the effect of angiotensin II on lung function. *Thorax* 1994;49:492-5.
59. Myou S, Fujimura M, Kamio Y, et al. Effect of losartan, a type 1 angiotensin II receptor antagonist, on bronchial hyper-responsiveness to methacholine in patients with bronchial asthma. *Am J Respir Crit Care Med* 2000;162:40-4.
60. Caldeira D, David C, Sampaio C. Tolerability of angiotensin-receptor blockers in patients with intolerance to angiotensin-converting enzyme inhibitors: a systematic review and meta-analysis. *Am J Cardiovasc Drugs* 2012;12:263-77.
61. Tanaka H, Teramoto S, Oashi K, et al. Effects of candesartan on cough and bronchial hyper-responsiveness in mildly to moderately hypertensive patients with symptomatic asthma. *Circulation* 2001;104:281-5.
62. Patakas D, Vlachoanni E, Tsara V, Louridas G, Argiropoulou P. Nifedipine in bronchial asthma. *J Allergy Clin Immunol* 1983;72:269-73.
63. Patakas D, Maniki E, Tsara V, Dascalopoulou E. Nifedipine treatment of patients with bronchial asthma. *J Allergy Clin Immunol* 1987;79:959-63.
64. Chiu KY, Li JG, Lin Y. Calcium channel blockers for lung function improvement in asthma: A systematic review and meta-analysis. *Ann Allergy Asthma Immunol* 2017;119(6):518-523.e3.
65. Flack JM, Sica DA, Bakris G, et al. Management of high blood pressure in blacks: an update of the International Society on Hypertension in Blacks consensus statement. *Hypertension* 2010;56:780-800.

66. Qi H, Liu Z, Cao H, et al. Comparative efficacy of antihypertensive agents in salt-sensitive hypertensive patients: a network meta-analysis. *Am J Hypertens* 2018;31:835-46.
67. Harman J, Walker ER, Charbonneau V, Akylbekova EL, Nelson C, Wyatt SB. Treatment of hypertension among African Americans: the Jackson Heart Study. *J Clin Hypertens* (Greenwich) 2013;15:367-74.
68. Lipworth BJ, McDevitt DG, Struthers AD. Prior treatment with diuretic augments the hypokalemic and electrocardiographic effects of inhaled albuterol. *Am J Med* 1989;86:653-7.
69. Sholter DE, Armstrong PW. Adverse effects of corticosteroids on the cardiovascular system. *Can J Cardiol* 2000;16:505-11.
70. Salpeter SR, Ormiston TM, Salpeter EE. Cardiovascular effects of beta-agonists in patients with asthma and COPD: a meta-analysis. *Chest* 2004;125:2309-21.
71. Manka LA, Wechsler ME. Selecting the right biologic for your patients with severe asthma. *Ann Allergy Asthma Immunol* 2018;121:406-13.
72. Ryan S, Taylor CT, McNicholas WT. Systemic inflammation: a key factor in the pathogenesis of cardiovascular complications in obstructive sleep apnea syndrome? *Thorax* 2009;64:631-6.
73. Ng M, Fleming T, Robinson M, et al. Global, regional, and national prevalence of overweight and obesity in children and adults during 1980-2013: a systematic analysis for the Global Burden of Disease Study 2013. *Lancet* 2014;384:766-81.
74. Health, United States, 2015: with special feature on racial and ethnic health disparities. Hyattsville, MD: National Center for Health Statistics, 2016.
75. Drøgvold WB, Midthjell K, Nilsen TI, Holmen J. Change in body mass index and its impact on blood pressure: a prospective population study. *Int J Obes (Lond)* 2005;29:650-5.
76. Quinto KB, Zuraw BL, Poon KY, Chen W, Schatz M, Christiansen SC. The association of obesity and asthma severity and control in children. *J Allergy Clin Immunol* 2011;128:964-9.
77. DeMarco VG, Aroor AR, Sowers JR. The pathophysiology of hypertension in patients with obesity. *Nat Rev Endocrinol* 2014;10:364-76.
78. Peters U, Dixon AE, Forno E. Obesity and asthma. *J Allergy Clin Immunol* 2018;141:1169-79.
79. Heymsfield SB, Wadden TA. Mechanisms, pathophysiology, and management of obesity. *N Engl J Med* 2017;376:254-66.
80. Appel LJ, Moore TJ, Obarzanek E, et al. A clinical trial of the effects of dietary patterns on blood pressure. *N Engl J Med* 1997;336:1117-24.
81. Sacks FM, Svetkey LP, Vollmer WM, et al. Effects on blood pressure of reduced dietary sodium and the Dietary Approaches to Stop Hypertension (DASH) diet. *N Engl J Med* 2001;344:3-10.
82. Ma J, Strub P, Lv N, et al. Pilot randomized trial of a healthy eating behavioural intervention in uncontrolled asthma. *Eur Respir J* 2016;47:122-32.
83. Whelton PK, Appel LJ, Espeland MA, et al. Sodium reduction and weight loss in the treatment of hypertension in older persons: a randomized controlled trial of non-pharmacologic interventions in the elderly (TONE). *JAMA* 1998;279:839-46.
84. Whelton PK, Carey RM, Aronow WS, et al. 2017 ACC/AHA/AAPA/ABC/ACPM/AGS/APHA/ASH/ASPC/NMA/PCNA guideline for the prevention, detection, evaluation, and management of high blood pressure in adults: executive summary: a report of the American College of Cardiology/American Heart Association Task Force on Clinical Practice Guidelines. *Hypertension* 2018;71:1269-324.
85. Neter JE, Stam BE, Kok FJ, Grobbee DE, Geleijnse JM. Influence of weight reduction on blood pressure: a meta-analysis of randomized controlled trials. *Hypertension* 2003;42:878-84.
86. Toennesen LL, Meteran H, Hostrup M, et al. Effects of exercise and diet in nonobese asthma patients — a randomized controlled trial. *J Allergy Clin Immunol Pract* 2018;6:803-11.
87. Spruill TM. Chronic psychosocial stress and hypertension. *Curr Hypertens Rep* 2010;12:10-6.
88. Rosenberg SL, Miller GE, Brehm JM, Celedón JC. Stress and asthma: novel insights on genetic, epigenetic, and immunologic mechanisms. *J Allergy Clin Immunol* 2014;134:1009-15.
89. Chen E, Miller GE. Stress and inflammation in exacerbations of asthma. *Brain Behav Immun* 2007;21:993-9.

Copyright © 2019 Massachusetts Medical Society.

#### IMAGES IN CLINICAL MEDICINE

The *Journal* welcomes consideration of new submissions for Images in Clinical Medicine. Instructions for authors and procedures for submissions can be found on the *Journal's* website at NEJM.org. At the discretion of the editor, images that are accepted for publication may appear in the print version of the *Journal*, the electronic version, or both.